



Combination air valve Mod. FOX 3F

The CSA air valve Mod. FOX 3F will ensure the proper operation of the pipeline network allowing the release of air pockets during working conditions, the evacuation and entrance of large volumes of air during filling and draining operations.



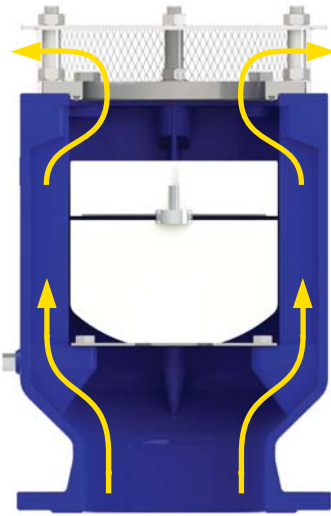
Technical features and benefits

- Body in ductile cast iron, PN 40 bar rated, provided with internal ribs for consistent and accurate guiding of the mobile block.
- In general supplied with fixed flanges and, for some DN only, mobile flanges (according to EN 1092/2) that can be changed to suit different pressure conditions.
- Drainage valve, produced by CSA, for chamber control and pressure relief during maintenance.
- Mobile block composed of a cylindrical float and upper disk in solid polypropylene, joined together by the CSA air release system in AISI 316 (pat. Pending). The solid cylindrical floats, obtained by CNC machining, avoid deformations and ensure a great sliding precision inside the body processed ribs and a perfectly vertical thrust.
- Nozzle and gasket holder, part of CSA air release system, entirely made in AISI 316 and designed with gasket compression control to prevent aging process and consequent leakage during working conditions.
- Maintenance can be easily performed from the top, without removing the air valve from the pipe.
- Mesh and cap in stainless steel for the M version only.

Applications

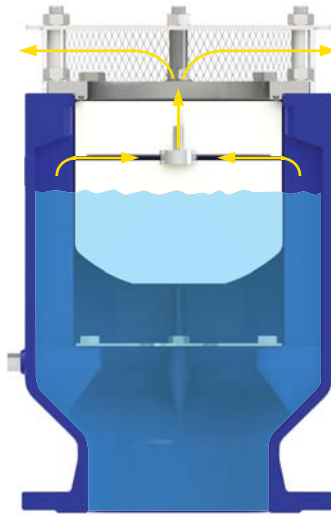
- Main transmission lines.
- Water distribution networks.
- Irrigation systems.
- In general this model is used on changes in slope descending and at the high points of the pipeline.

Operating principle



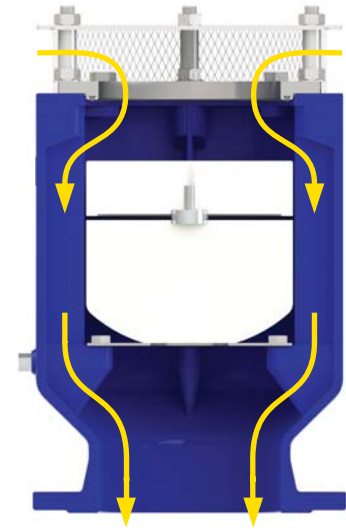
Discharge of large volumes of air

During the pipe filling it is necessary to discharge air as water flows in. The FOX 3F, thanks to an aerodynamic full port body and deflector, will make sure to avoid premature closures of the mobile block during this phase.



Air release during working conditions

During operation the air produced by the pipeline is accumulated in the upper part of the air valve. Little by little it is compressed and the pressure arrives to water pressure, therefore its volume increases pushing the water level downwards allowing the air release through the nozzle.



Entrance of large volumes of air

During pipeline draining, or pipe bursts, it is necessary to bring in as much air as the quantity of outflowing water to avoid negative pressure and serious damages of the pipeline, and to the entire system.

Optional



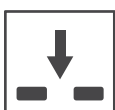
■ **Vacuum breaker version Mod. FOX 2F**, to allow the entrance and discharge of large volumes of air only. This model is normally recommended in changes in slope ascending, long ascending segments, dry fire systems, and wherever the air release won't be required.



■ **Version for submerged applications, SUB series**, available both for FOX 3F and 2F Models, with elbow for air conveyance. The design sprang from the necessity of having an air valve performing also in case of flood, without the risk of contaminated water entering the pipeline. Another benefit of SUB is to avoid the spray effect, conveying spurts coming from the rapid closure of the air valve.

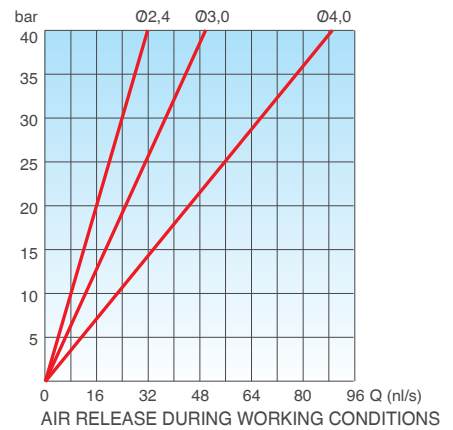
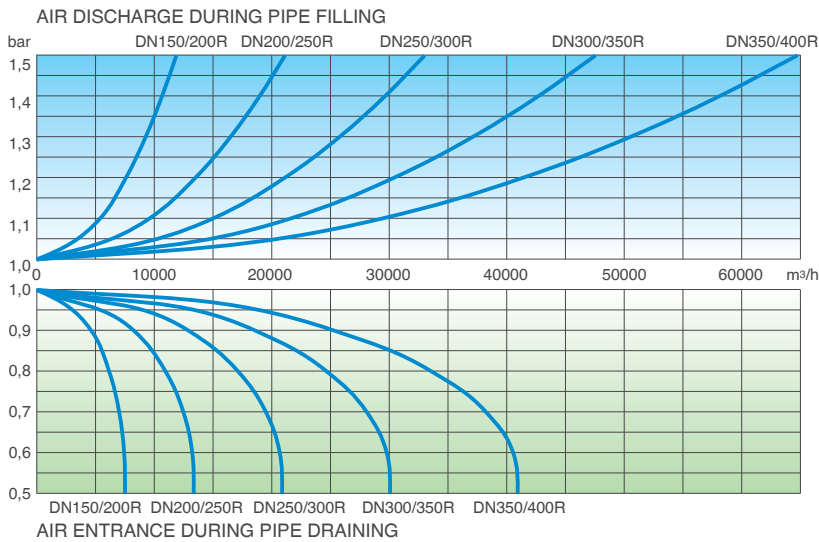
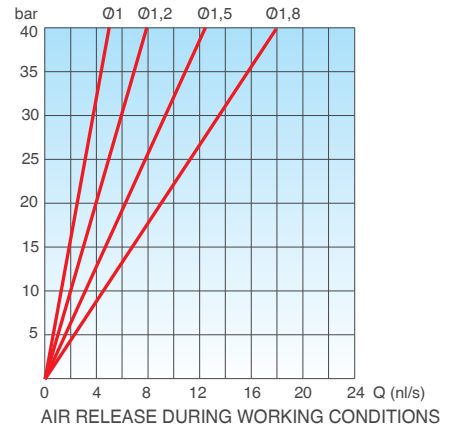
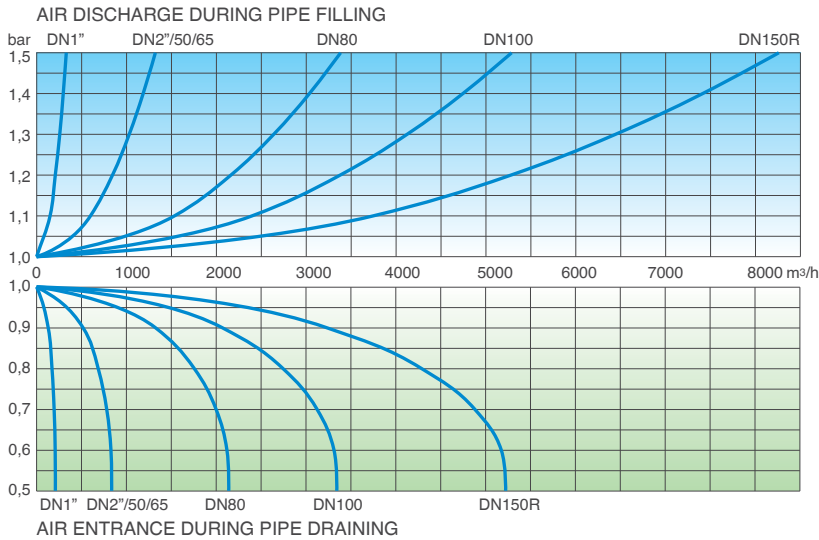


■ **Version for air discharge only EO series**, available both for FOX 3F and 2F models. The most important application of EO is to allow the air valve installation in those locations of the system where HGL may drop below the pipe profile, and to any other node where for project requirements air entrance must be avoided.



■ **Version for air entrance only IO series**, available for FOX 2F model only. The most important application of IO is to allow the air valve installation in those locations of the system where, for project requirements, air discharge and release must be avoided.

Air flow performance charts



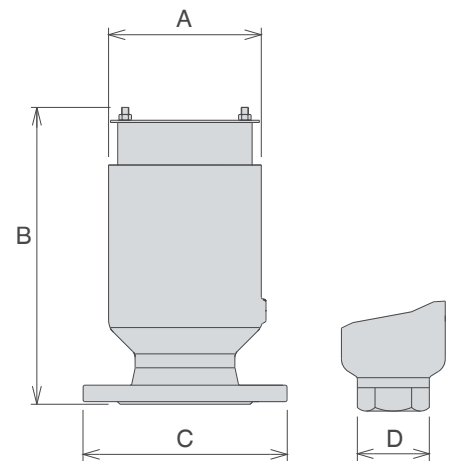
Working conditions

Treated water max. 60°C;
 Max. pressure 40 bar;
 Min. pressure 0,3 bar;
 Low pressure version to 0,19 bar on request.

Standard

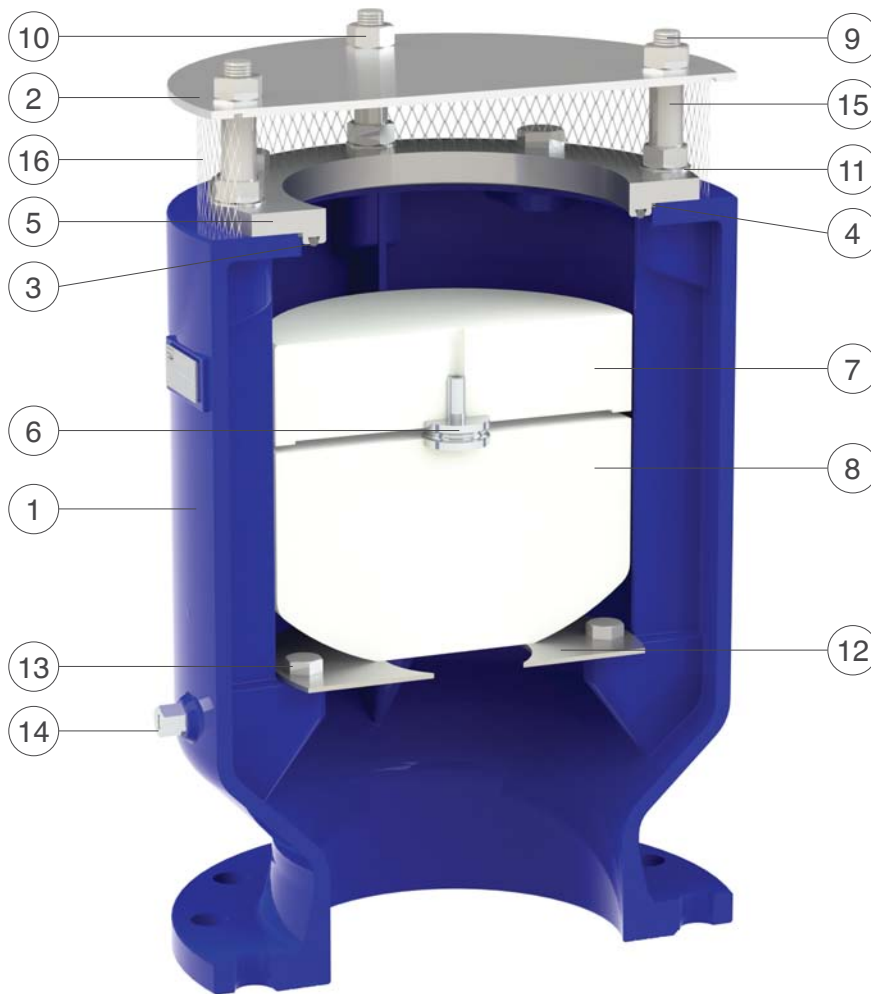
Designed in compliance with EN-1074/4 and AWWA C-512.
 Flanges according to EN 1092/2.
 Epoxy painting applied through fluidized bed technology blue RAL 5005.
 Changes and variations on the flanges and painting details available on request.

| CONNECTION inch/mm | A mm | B mm | C* mm | C** mm | D mm | Weight Kg |
|-----------------------|---------|---------|----------|-----------|---------|--------------|
| Threaded 1" | 93 | 217 | = | = | CH 45 | 3,3 |
| Threaded 2" | 118 | 277 | = | = | CH 75 | 6,1 |
| Flanged 50 | 118 | 290 | 165 | 165 | = | 8,1 |
| Flanged 65 | 118 | 290 | 185 | 185 | = | 8,6 |
| Flanged 80 | 142 | 322 | 200 | 205 | = | 11,1 |
| Flanged 100 | 180 | 364 | 220 | 235 | = | 18,5 |
| Flanged 150R | 218 | 435 | 285 | 300 | = | 34,5 |
| Flanged 150 | 261 | 500 | 285 | 300 | = | 49,0 |
| Flanged 200R | 261 | 500 | 340 | 340 | = | 51,0 |
| Flanged 200 | 333 | 574 | 340 | 375 | = | 94,0 |
| Flanged 250R | 333 | 574 | = | 400 | = | 102,0 |
| Flanged 250 | 414 | 735 | = | 450 | = | 121,0 |
| Flanged 300R | 414 | 735 | = | 485 | = | 127,0 |
| Flanged 300 | 492 | 850 | = | 515 | = | 240,0 |
| Flanged 350R | 492 | 850 | = | 580 | = | 250,5 |
| Flanged 350 | 570 | 995 | = | 580 | = | 295,0 |
| Flanged 400R | 570 | 995 | = | 660 | = | 304,0 |



* M.F. = mobile flanges version
 ** F.F. = fixed flanges version

Technical details



Version with cap and mesh in stainless steel, M series, available from 1" up to DN 400.



Version with cap in ductile, C series, available from 1" up to DN 150.

| N. | Component | Material | Standard |
|----|---------------|-------------------------------------|--------------------------|
| 1 | Body | ductile cast iron | GJS 500-7 |
| 2 | Cap | stainless steel / ductile cast iron | AISI 304/316 / GJS 500-7 |
| 3 | O-ring | NBR | |
| 4 | O-ring | NBR | |
| 5 | Seat | stainless steel | AISI 304/316 |
| 6 | Nozzle Subset | stainless steel | AISI 316 |
| 7 | Upper flat | polypropylene | |
| 8 | Float | polypropylene | |
| 9 | Studs | stainless steel | A2/A4/AISI 316 |
| 10 | Bolts | stainless steel | A2/A4/AISI 316 |
| 11 | Washer | stainless steel | A2/A4/AISI 316 |
| 12 | Diffuser | stainless steel | AISI 304/316 |
| 13 | Screws | stainless steel | A2/A4/AISI 316 |
| 14 | Drain valve | stainless steel | AISI 304/316 |
| 15 | Spacers | stainless steel | AISI 304/316 |
| 16 | Filter | stainless steel | AISI 304 |